



Set up with videos:

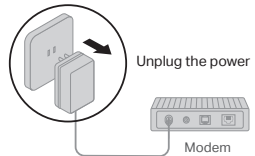
Scan QR code or visit

<https://www.tp-link.com/support/setup-video/#wi-fi-routers>

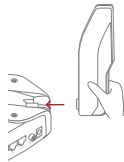


1 Connect the Hardware

! **Unplug the power** to turn off your modem, if any, and remove the backup battery if it has one.

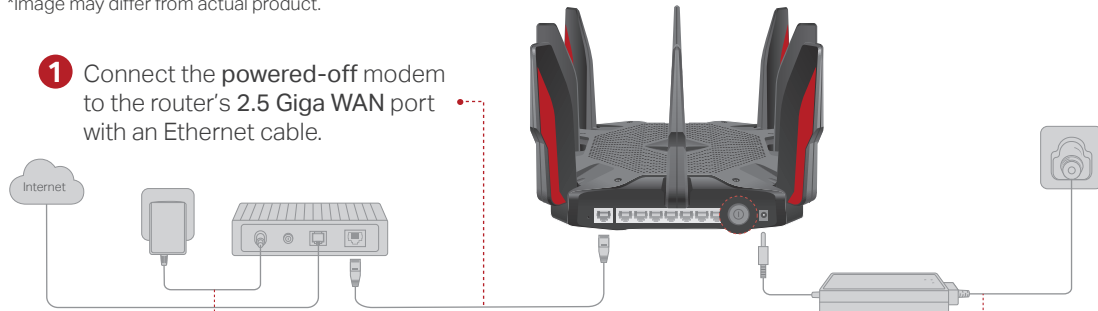


Hold the antennas from the base and push them fully into the slots.



If your internet connection is through an Ethernet cable directly from the wall instead of through a DSL / Cable / Satellite modem, connect the Ethernet cable to the router's 2.5 Giga WAN port, and then follow steps 3 and 4 to complete the hardware connection.

*Image may differ from actual product.



1 Connect the **powered-off** modem to the router's 2.5 Giga WAN port with an Ethernet cable.

2 Power on the modem, and then wait about 2 minutes for it to restart.

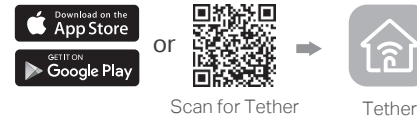
4 Verify the LED on the top is solid on (red or white) before moving on.

3 Connect the power adapter to the router and turn on the router.

2 Configure the Router

Method ONE: Via TP-Link Tether App

1. Download the Tether app.



2. Open the Tether app and log in with your TP-Link ID.

Note: If you don't have an account, create one first.

3. Tap the **+** button in the Tether app and select Archer AX11000. Follow the steps to complete the setup and connect to the internet.

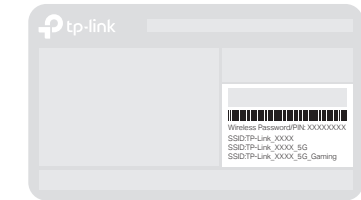


Enjoy the internet !

Method TWO: Via a Web Browser

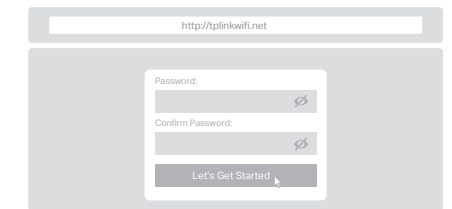
1. Connect your device to the router wirelessly or with an Ethernet cable.

The default wireless network names (SSIDs) and password are printed on the label at the bottom of the router.



2. Launch a web browser, and enter <http://tplinkwifi.net> or <http://192.168.0.1> in the address bar. Create a password to log in.

Note: If the login window does not appear, please refer to Q1 of Need Help? in this guide.



3. Follow the step-by-step instructions to set up the internet connection and register for the TP-Link Cloud service.

Enjoy the internet !

LED & Button Explanation



Pulsing Orange

The system is starting up.



Solid White

The router is working normally.



Solid Red

No internet connection.



Solid Orange

The router is connected to the internet, but the Wi-Fi is off.



Pulsing White

The firmware is being upgraded, WPS connection is being established or the router is being reset.



WPS Button

Press the WPS button, and immediately press the WPS button on your client to start the WPS process.



Wi-Fi Button

Press the Wi-Fi button to turn on or off the wireless function of your router.



LED Button

Press the LED button to turn on or off the LED of your router.

- Keep the device away from water, fire, humidity or hot environments.
- Do not attempt to disassemble, repair, or modify the device.
- Do not use any other chargers than those recommended.
- Do not use damaged charger or USB cable to charge the device.
- Do not use the device where wireless devices are not allowed.
- Adapter shall be installed near the equipment and shall be easily accessible.

©2020 TP-Link 7106508704 REV 1.0.3

Need Help?



Q1. What should I do if I can't access the web management page?

- Reboot your router and try again.
- If the computer is set to a static IP, change its settings to obtain an IP address automatically.
- Verify that <http://tplinkwifi.net> is correctly entered in the web browser. Alternatively, enter <http://192.168.0.1> or <http://192.168.1.1> in the web browser.
- Use another web browser and try again.
- Disable and enable the network adapter in use.

Q2. What should I do if I can't access the internet?

- Reboot your modem and router, then try again.
- Check if the internet is working normally by connecting a computer directly to the modem via an Ethernet cable. If it is not, contact your internet service provider.
- Log in to the web management page of the router, and go to **Advanced > Network > Status** to check whether the internet IP address is valid or not. If it is, please run the Quick Setup again; otherwise, check the hardware connection.
- For cable modem users, log in to the web management page of the router and go to **Advanced > Network > Internet > MAC Clone**. Select **Clone Current Device MAC** and click **SAVE**. Then reboot both the modem and the router.

Q3. What should I do if the router can't be found via Bluetooth in Tether (how to reset the router)?

The router's Bluetooth will be enabled for 30 minutes following a reset to factory defaults. There are two ways to reset the router:

- With the router powered on, use a pin to press and hold the **Reset** button on the back of the router until the LED blinks.
- Log in to the web management page of the router. Go to **Advanced > System > Backup & Restore**, and click **FACTORY RESTORE**. The router will reset and restart automatically.



To communicate with TP-Link users or engineers, visit <https://community.tp-link.com> to join the TP-Link Community.



For technical support, replacement services, the user guide and more information, please visit <https://www.tp-link.com/support>



If you have any suggestions or needs for our product guides, you are welcome to email techwriter@tp-link.com.cn.

Quick Installation Guide



Next-Gen Tri-Band Gaming Router

Archer AX11000

