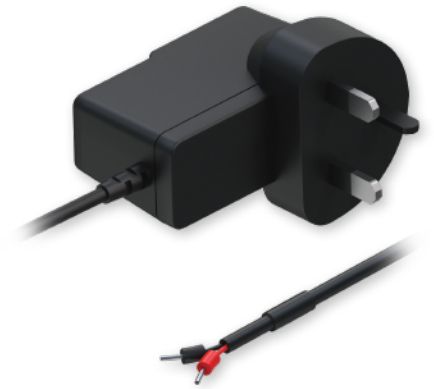


UK 2-PIN POWER SUPPLY, 9W



TECHNICAL DATA

GENERAL

| | |
|------------------|--------------------------------|
| Input voltage | 100 - 240 VAC |
| Input frequency | 50/60 Hz |
| Input current | 0.45 A |
| Output voltage | 9 VDC |
| Output current | 1.0 A |
| Input connector | UK (Type G) |
| Output connector | 2-PIN, with cord end terminals |

ADDITIONAL

| | |
|-----------------------------------|--------------------------------|
| Input voltage absolute maximum | 90 - 262 VAC |
| Input frequency absolute maximum | 47 - 63 Hz |
| Inrush current | 40 A |
| Output voltage absolute maximum | 8.55 - 9.45 VDC |
| Short circuit protection | ✓ |
| HIPOT (dielectric withstand test) | Primary to Secondary: 3000 VAC |
| MTBF | 50000 h |

Certification
 EN 62368-1:2014+A11:2017
 EN 55032:2015, EN 55035:2017
 EN 61000-3-2:2014, EN 61000-3-3:2013
 IEC 62321-7-1:2015, IEC 62321-6:2015, IEC 62321-5:2013,
 IEC 62321-4:2013, IEC 62321:2008 Annex C

