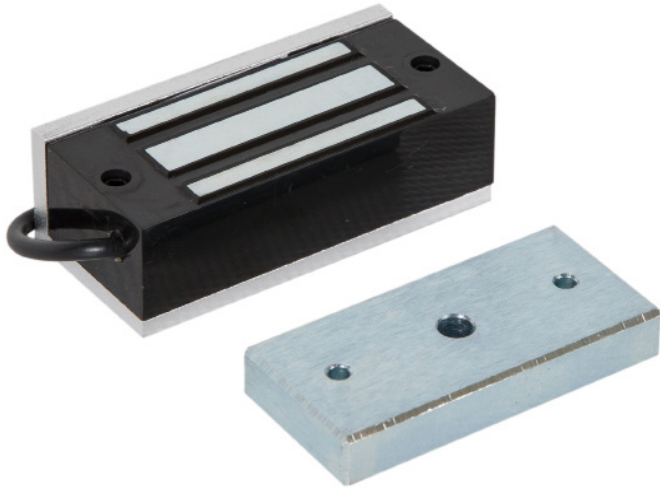




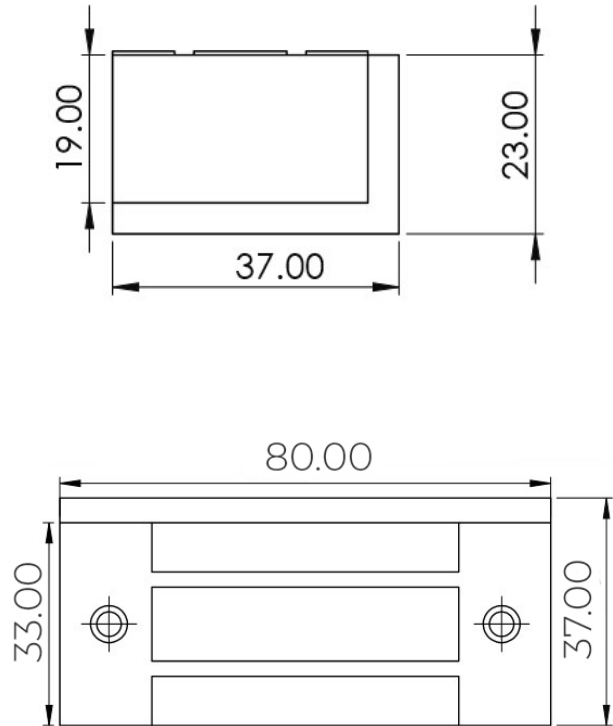
# MICRO/CABINET MAGNETIC LOCK (100LB)

**MAGNETIC LOCK**

Micro range of maglocks and brackets from a market leader in access control.



**ML100**



## SPECIFICATION

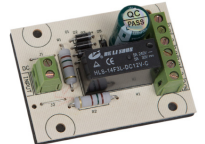
- ML100
- Epoxy potted housing
  - 12VDC @ 150mA
  - 60kg (100lb) holding force
  - Built in surge protection
  - Cable length: 120mm
  - Surface mount
  - Fail safe operation (power to lock)
  - +/- 15% voltage tolerance
  - -10° to +50° operating temperature

## FEATURES

- ML100
- Slim line micro magnet
  - Ideal for cabinets and lockers
  - No residual magnetism
- Suitable Brackets/Housings:
- Comes complete with L bracket

## OTHER PRODUCTS

**RL02**



**KPX1000**



**ML600**



**EBLS/AP/PTE**



## DIMENSIONS

- ML100
- 80x33x20 (mm) Maglock
  - 73x32x11 (mm) Armature
  - 0.55kg Boxed
  - 0.27kg Unboxed

## CONTENTS

- ML100
- Micro magnetic lock
  - Armature plate
  - L bracket
  - Fixing kit
  - Instructions
  - Armature fixing template



Manufactured by a BSIA Member