



EMERGENCY DOOR RELEASE

EDR



EDR



RESETKEY-N



EDR-COVER-N

(only if you require a replacement cover)

The new range of Emergency Door Release Bought to you by RGL.

SPECIFICATION

- EDR-N
- Single pole (EDR-1N)
 - 1 x Pole (Positive switching)
 - Double pole (EDR-2N)
 - 1 x Pole (Positive switching)
 - 1 x Pole (Changeover contact)
 - Triple pole (EDR-3N)
 - 1 x Pole (Positive switching)
 - 2 x Pole (Changeover contact)
 - Includes audible/LED (selectable)
 - 12/24V operation
 - Voltage 12/24 VDC @ 30/45mA
 - Operating temperature: -10C to 55C
 - IP24 Rated
 - Resettable

FEATURES

- EDR-N
- All one colour
 - Easy clean surface (ideal for hospitality areas)
 - Easy cable entry from sides or rear
 - Screw footprint for surface fitting onto standard back box
 - Key reset operation (not replacement glass)
 - Internal use
 - Emergency Door Release - permanently lit.
 - Changes to red on activation/alarm
 - Includes plastic front covers which flip up for operation

OTHER PRODUCTS

KPX1000



MEXT-EBGB



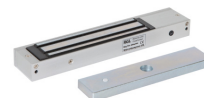
DIMENSIONS

- EDR-N
- 87x87x60 (mm)
 - 248g (Boxed)
 - 162g (Unboxed)

CONTENTS

- EDR-N
- Emergency Door Release
 - EDR-COVER-N
 - Security Screws
 - Allen Key
 - Mounting Plate
 - 2 RESETKEY-N

ML600



120ISM-1



Manufactured by a BSIA Member