



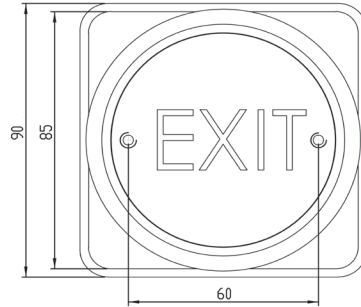
# PUSH PLATE EXIT BUTTON

# EXIT BUTTONS

Market leading exit buttons, that are both hard wearing and cost effective. Suitable for use in applications up to 30V.



**EBPP02**



**EBPP02P/GN**

## SPECIFICATION

- EBPP02
- All active 360 push plate
  - 4 AMP contact @ 30V AC/DC
  - Surface or flush fitting
  - Double pole NO/NC contact
  - Internal or External use
  - Button rated IP65 ingress protection
  - Silver contacts
  - Operating temperature -20° to +60°c
  - Operating travel: 2mm
  - Contact resistance: 10m OHM (Max)
  - Operating life (mechanical): 1,000,000

## FEATURES

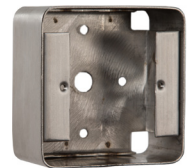
- EBPP02
- Ideal for general use
  - Easy cable entry from sides or rear
  - Screw footprint for flush fitting onto standard back box
  - Can be surface or flush fitting
  - Easy clean surface
  - Distance between fixing holes 60mm

## OTHER PRODUCTS

120ISM-1



SSBB02



## DIMENSIONS

- EBPP02
- 85x85x32 (mm)
  - 282g (Boxed) • 242g (Unboxed)
- EBPP02P
- 94x94x28 (mm)
  - 204g (Boxed) • 168 (Unboxed)

## CONTENTS

- EBPP02
- Exit Button
  - Stainless Steel Plate (2mm)
  - 2 Security Screws
  - Allen Key
  - Surface Box

ML600



DU-GB/PTE



Manufactured by a BSIA Member