



# DUAL UNIT - BUTTON & EDR

DUAL UNIT EDR

Dual Unit - Emergency Door Release and Exit Button



DU-GB/PTE



DU-NT/TF



DU-SS/PTE

## SPECIFICATION

- Dual Units
- High impact plastic back box (robust design)
  - Double pole contact N/O-N/C @ 30VAC/DC
  - Designed for greater than 1 million operations
  - Wear resistant legend
  - Security screws (allen key type)
  - EDR: Triple pole
  - Includes audible/LED (selectable)
  - 12/24V operation
  - Includes plastic covers which flip for operation
  - IP24 Rated

## FEATURES

- Dual Units
- All one colour
  - Easy clean surface
  - Screw footprint for surface fitting onto standard back box
  - Saves labour time on wiring
- DU-GB/PTE
- Green dome button
- DU-SS/PTE
- Stainless steel button
- DU-NT/TF
- Touch free operation
  - Adjustable timer (0.5 to 20 seconds)
  - Adjustable distance (3 to 12cm)

## OTHER PRODUCTS

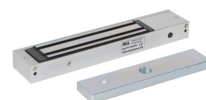
EBCBWC02/DR



EXTR02



ML600



DU-GB/PTE



## DIMENSIONS

- DU-GB/PTE
- 160x90x42/37 (mm) (HxWxD)
  - 380g (Boxed)
  - 300g (Unboxed)

## CONTENTS

- Dual Unit
- Emergency Door Release
  - DU-COVER
  - Security Screws
  - Allen Key
  - Mounting Plate
  - 2 Reset Key



Manufactured by a BSIA Member