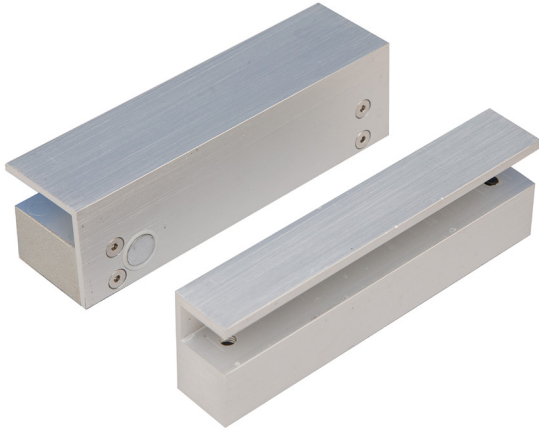


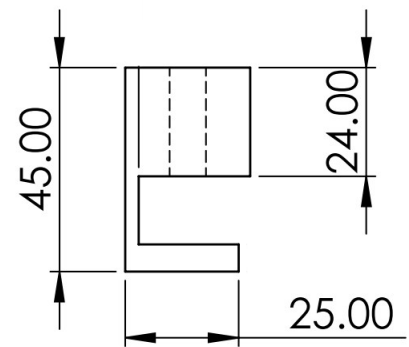
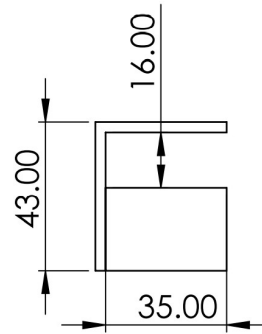


# SOLENOID BOLT GLASS DOOR

MAGNETIC LOCK



**DBGLS150**



## SPECIFICATION

- DBGLS150
- Operating voltage: 12VDC
  - Standby current: 120mA
  - Operating current: 900mA
  - Suitable for double action swinging doors
  - Holding force 1000kg
  - For use on frameless glass doors up to 15mm thickness

## FEATURES

- DBGLS150
- Robust aluminium
  - Fail-safe operation
  - Long life drop bolt
  - Auto locking after 3, 6 or 9 seconds
  - Greater than 500,000 operation
  - Auto relocking timer setting

## OTHER PRODUCTS



## DIMENSIONS

- DBGLS150
- Dropbolt: 148x42x39 (mm)
  - Strike Plate: 148x42x25 (mm)

## CONTENTS

- DBGLS150
- 2 Glass door units
  - Door shims



Manufactured by a BSIA Member