

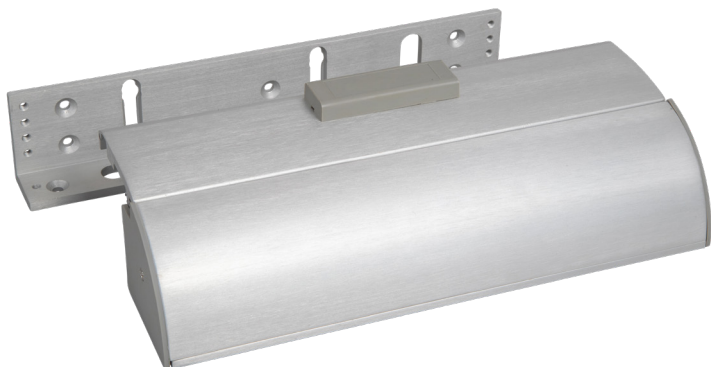


# ARCHITECTURAL BRACKETS RGL SAFETY RANGE

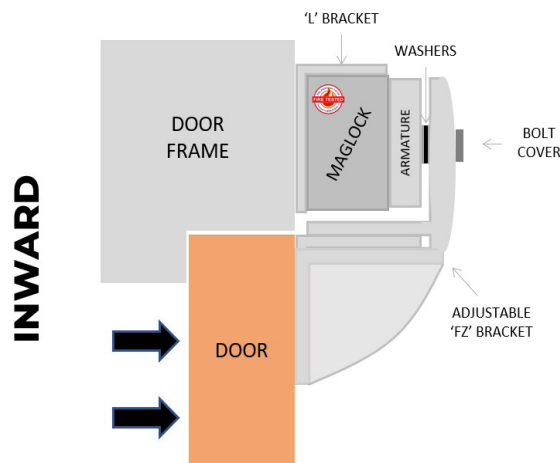
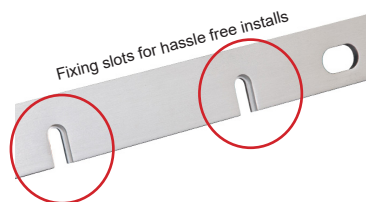
**MAGNETIC LOCK**

Fire tested range of maglocks and brackets from a market leader in access control.

**FIRE TESTED** to  
BSEN1634-1-2014 & BS476:Part22:1987  
(30, 60, 90 & 120 min timber door-sets)

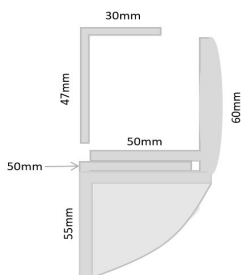


**BK600-F-L/AB**



## SPECIFICATION

**BK600-F-L/AB**  
 • Specially designed bracket slots that allows for a simple one person installation of maglocks  
 • Fully adjustable brackets  
 • Suitable for all RGL Slimline Maglocks - inc: ML600 / ML600-M / ML600-MDS



## DIMENSIONS

**BK600-F-L/AB**  
 • 250x47x30 (mm) L Bracket (LxWxD)  
 • 250x50x55 (mm) Z Bracket (LxWxD) x2  
 1.18kg Boxed

## FEATURES

**BK600-F-L/AB**  
 • Fire rated (30, 60, 90 & 120 min timber door set)  
 • L bracket for use on outward opening doors  
 • ZL bracket for use on inward opening doors  
 • Anodised aluminium finish

If you are looking for alternative options, then please view the following bracket:

Other bracket options:

- BK600ZL (ZL Bracket)
- GD600ZL (Glass Door ZL)
- AB600CL (Architectural L)
- ADJ600-L (Highly adjustable L)
- AH600 (Required for Fire Doors)
- BK600U (Glass door bracket)

INWARD  
OUTWARD

## OTHER PRODUCTS

**EBNT/TF-1**



**120ISM-1**



**BK600-F-L/AB**



**DU-CB/PTE**

