

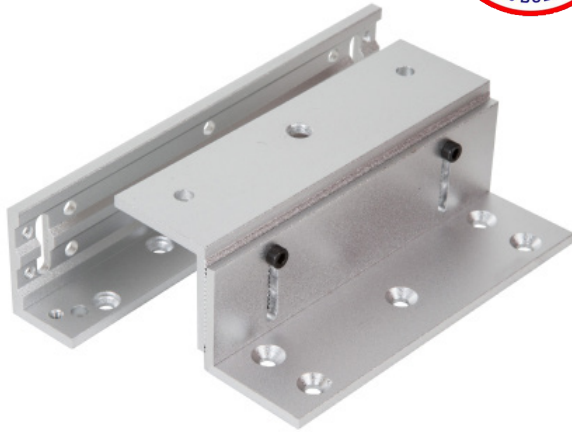


BRACKETS FOR SLIMLINE MAGNET (300LB)

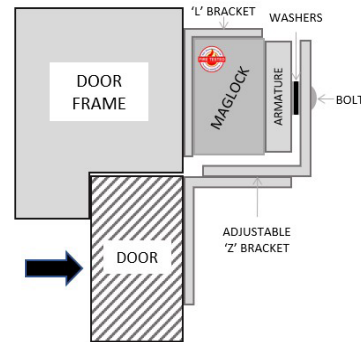
MAGNETIC LOCK

Fire tested range of maglocks and brackets from a market leader in access control.

FIRE TESTED to
BSEN1634-1-2014 & BS476:Part22:1987
(30, 60, 90 & 120 min timber door-sets)



BK300ZL



SPECIFICATION	FEATURES	OTHER PRODUCTS
---------------	----------	----------------

BK300ZL
 • Adjustable Z&L brackets
 • For use with ML300 range

BK300ZL
 • ZL bracket

EBCBWC02/DR



EXTR02



DIMENSIONS	CONTENTS	OTHER PRODUCTS
------------	----------	----------------

BK300ZL
 • Z = 130 mm
 • L = 170 mm
 • 318kg (Boxed)
 • 230kg (Unboxed)

BK300ZL
 • 2 x Brackets to make up Z
 • 1 x L Adjustable bracket
 • 1 x Fixing kit

ML600



DU-CB/PTE

