

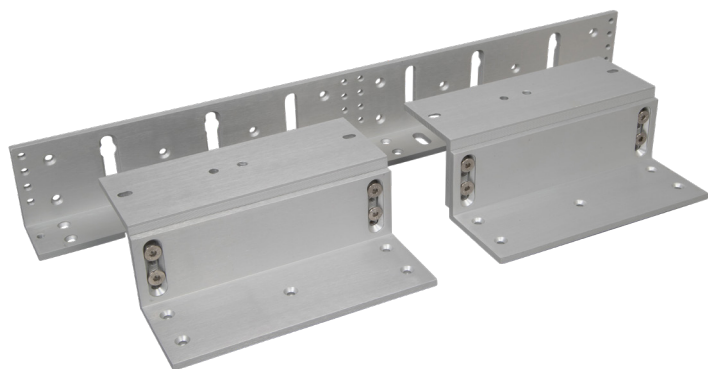
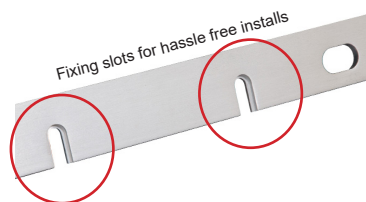


DOUBLE 1200 BRACKETS RGL SAFETY RANGE

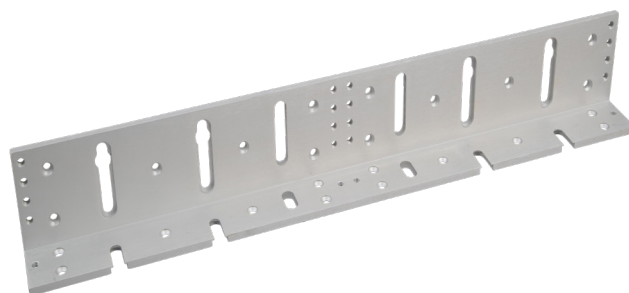
MAGNETIC LOCK

Fire tested range of maglocks and brackets from a market leader in access control.

FIRE TESTED to
BSEN1634-1-2014 & BS476:Part22:1987
(30, 60, 90 & 120 min timber door-sets)



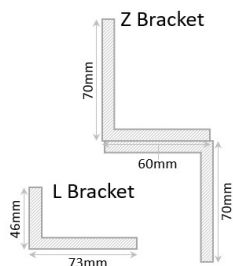
BK1200-D-ZL



BK1200-D-L

SPECIFICATION

BK1200-D-ZL & BK1200-D-L
 • Specially designed bracket slots that allows for a simple one person installation of double maglocks
 • Fully adjustable brackets
 • Suitable for all RGL Standard Maglocks - inc: ML1200-D / ML1200-D-M



DIMENSIONS

BK1200-D-ZL
 • 532x73x46 (mm) L Bracket (LxWxD)
 • 185x70x60 (mm) Z Bracket (LxWxD) x2
 2.55kg Boxed
BK1200-D-L
 • 532x73x46 (mm) L Bracket (LxWxD)
 1.16kg Boxed



FEATURES

BK1200-D-ZL & BK1200-D-L
 • Fire rated (30, 60, 90 & 120 min timber door set)
 • L bracket for use on outward opening doors
 • ZL bracket for use on inward opening doors
 • Anodised aluminium finish
 • Z Bracket can provide an extra 20mm-30mm of reach for non standard door settings

If you are looking for an architectural finish, then please view the following bracket:
 • BK1200-D-FL/AB

Other bracket options:
 • ADJ1200-L (Highly adjustable L)
 • AH1200 (Required for Fire Doors)

OUTWARD

CONTENTS

BK1200-D-ZL
 • Double L Bracket (1200lb)
 • 2 x ZL Brackets
 • 2 x Fixing kits

BK1200-D-L
 • Double L Bracket (1200lb)
 • Fixing kit

OTHER PRODUCTS

EBNT/TF-1



120ISM-1



BK600-F-L/AB



DU-CB/PTE



Manufactured by a BSIA Member