

Multifunctional Monitoring Tester

HD retinal display

Dual Gigabit Ethernet port

Max 4K H.264 camera decoding

Support max 800W pixels of AHD, CVI, TVI, SDI camera



Full-view retinal display

Tester T1 series features a 7-inch retina IPS display with an impressive 323 ppi that gives you a wonderful visual enjoyment. Besides, it supports 60Hz refresh rate and touch response is more sensitive. And there is no need to worry about watching artifacts.

**1280x800
Resolution**

**7inch
Touchscreen**

**60Hz
Refresh rate**



A series of T1 products uses a highly flexible rubber protective cover on both sides to protect the equipment. It not only makes your hand comfortable, but also prevents the accidental fall from damaging the equipment and reduces the impact frequency of the interface. Besides, we added a key backlight on the right side, which can help users accurately find the key in the dark environment.

Professional monitoring and comprehensive test platform

Lightweight and portable, more good functions. The Dstar T1 series has built-in Wi-Fi modules for use as a tablet. User can install the app by themselves to unlock more features.

H.265

4K



AHD CVI TVI SDI

For monitoring, we have customized a variety of video solutions. Dstar T1 series supports H.265 decoding and can debug IP cameras up to 4K resolution, compatible with most mainstream protocols on the market. The Dstar T1S and T1X also incorporate AHD, CVI, TVI, and SDI modules, which also support resolutions up to 4K, making them more fully tunable for monitoring and debugging projects.

* AHD, CVI, TVI, SDI are only available for some models. Please look through technological parameter to learn detailed information.

Large capacity battery longer battery life

Built-in 57Wh high-capacity polymer lithium battery. The full of charging can work more than 10 hours. Besides, it can support power to camera for 2hours test via DC or POE.

57Wh	≈10 hours	≈2 hours
Polymer lithium battery	Working	Support power to camera

For camera power demand, tester equip 25W PO, 24V/2A and 12V/3A.

12V / 3A	24V / 2A	48V / 0.5A	5V / 2A
Voltage output	Voltage output	POE	Power bank

* Battery life may vary depending on usage and settings

All-round T1X

full function model provide a lot of technical tools to engineer.

【Digital Multimeter】

Support testing voltage, current, resistance, short circuit, diode, capacitance etc.

【Optical power meter】

Test power of optical equipment.

【Visual fault locator】

Send data for visual fault locator and optical fiber by physical optics.

【Measure breakpoint for

TDR cable】

TDR technology test open or short distance for coaxial cable or BNC cable.

【Digital tracer】

Digital and analog tracer. It can search for cable from tester.

【 Analog electrical level test】

Test peak value of video signal, sync level, burst level.

【HDMI input & output】

Support HDMI input & output. Max resolution for 1920*1080.

* The above function for T1X tester. Please view the technical parameters for other.

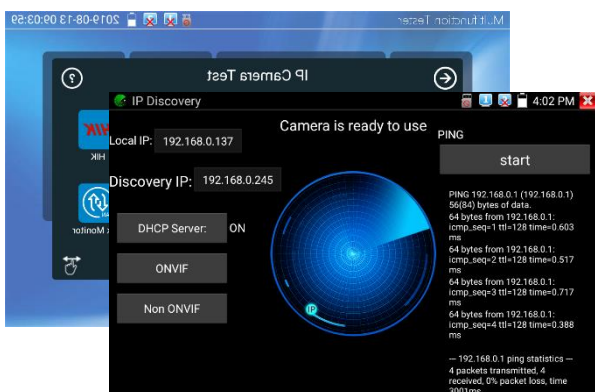
Easier to operate network debugging tools

T1 series of product has a variety of built-in network debugging tools. It is easy work for network monitoring test and network environment debugging.

Network camera debugging tool

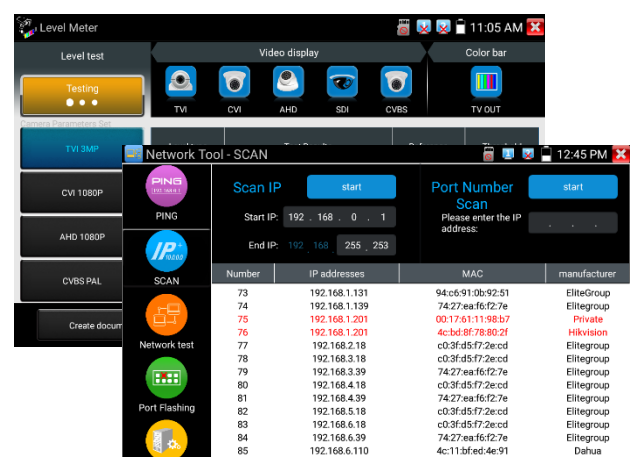
A variety of IPC testing tools to more comprehensively address the installation and commissioning of network cameras.

- ◆ **【IPC Discovery】** Search the network camera across the network segment, the meter automatically matches the same network segment as the camera, eliminating.
- ◆ **【Rapid ONVIF】** Quickly scan all network cameras under the same network segment as tester (only supported by ONVIF protocol)
- ◆ **【NON ONVIF】** Scans and watches non-ONVIF IP camera. Support various protocols on the market.
- ◆ **【Hikvision, Dahua, Uniview test tool】** Batch search, activate and revise Hikvision, Dahua, Uniview IP camera address.



Advanced network tools

- ◆ A variety of network testing tools are gathered together, and network debugging is more convenient.
- ◆ **【Network status】** Checking connect status of double net port.
- ◆ **【IP address scan】** Scanning connected IP addresses in the LAN across network segments.
- ◆ **【TDR cable test】** Measure length and attenuation of LAN cable of up to 180 meters.
- ◆ **【POE voltage test】** Test POE voltage and power of equipment. Test 12V input and output of voltage and power.
- ◆ **【LAN cable tracer】** Check LAN cable order.



We continue to develop more practical tools, as well as fix application bugs, and get the latest released application software in the instrument update program.

Technological parameter

Model	T1	T1H	T1S	T1X
Funtion	IP+Analog(CVBS)	IP+Analog 【AHD+CVI+TVI】 【HDMI IN】	IP+Analog AHD+CVI+TVI 【SDI】 【HDMI IN】	IP+Analog AHD+CVI+TVI SDI HDMI IN 【Digital multimeter】 【Optical power meter】 【Visual fault locator】 【TDR breakpoint test】 【Digital tracer】 【Analog level test】
Screen	7 inch full view touch screen 1280x800			
Language	Simplified Chinese, Traditional Chinese, English, Polish, Italian, Korean, Japanese, French, Spanish, Russian, German, Turkish, Czech, Serbian			
Memory	8G flash memory Expand TF memory card			
Network	Dual Gigabit Ethernet port, adaptive 10M / 100M / 1000M Built-in wireless WiFi, speed 150M			
Digital network video decoding	Hardware decoding which support viewing H.265 network camera video, up to 4K (3840 × 2160) resolution			
Decoding coaxial and analog video	CVBS analog decoding, RS485 / RS 232 PTZ control	Supports CVBS analog decoding and RS485 / RS 232 PTZ control Supports AHD cameras up to 4K (3840 × 2160) resolution, PTZ control Supports CVI cameras up to 4K (3840 × 2160) resolution, PTZ control Supports TVI cameras up to 4K (3840 × 2160) resolution, PTZ control		
Test HD SDI camera	——	——	HD-SDI video decoding 3G-SDI video decoding EX-SDI video decoding	
HDMI	HDMI output, maximum resolution 1920 × 1080	HDMI input, maximum resolution 1920 × 1080 HDMI output, maximum resolution 1920 × 1080		

Audio	Built-in speaker One way 3.5mm audio signal input One way 3.5mm audio signal output			
Battery and charger	Built-in 57Wh polymer lithium battery With 23W charger, fully charged 4~5 hours			
Output power	Support POE, 48V, maximum output power about 25W, with overload protection, and it can monitor output status Support 12V power output, maximum output current 3A, with overload protection, and it can monitor output status Support 5V power output, maximum output current 2A Support 24V power output, maximum output current 2A			
Input power	Support 12V input to test input voltage status Support POE access, test access voltage and power status			
Analog level test	—	—	—	Measuring the peak value, sync level, and burst level of the video signal
Tracer	—	—	—	Equipped with digital and analog 2-in-1 tracer to find cables based on the audio signal from the main unit of the instrument
Digital multimeter	—	—	—	Provides voltage, current, resistance, short circuit, diode, and capacitance test functions
Optical power meter	—	—	—	Tests the power sent by fiber optic equipment
Visible fault locator	—	—	—	Send visible red light, physical optical test fiber optic cable
TDR breakpoint test	—	—	—	TDR time domain reflection technology

				to test open or shorted distances of coaxial or twisted pair
Equipment size and weight	Size: 25.6 × 15.9 × 4.4cm Weight: ≈ 1.93kg	Size: 25.6 × 15.9 × 4.4cm Weight: ≈ 2.04kg	Size: 25.6 × 15.9 × 4.4cm Weight: ≈ 2.02kg	Size: 25.6 × 15.9 × 4.4cm Weight: ≈ 2.36kg
Packing size and weight	Size: 34× 32 × 12cm Weight: ≈ 2kg	Size: 34× 32 × 12cm Weight: ≈ 2.28kg	Size: 34× 32 × 12cm Weight: ≈ 2.26kg	Size: 34× 32 × 12cm Weight: ≈ 2.6kg
Working environment	Working temperature: -10 ~ +50 °C Operating humidity: 30% ~ 90%			